



Skyview

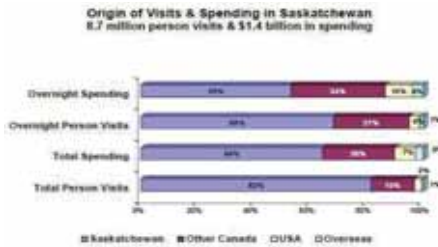
COUNTRY ESTATES



why saskatchewan?

The Saskatchewan tourism industry has shown steady growth over the last few years despite the recent global economic crisis.

Travel and tourism generated almost \$1.63 billion in traveler expenditures for the province with just under 8.9 million visits made to and within Saskatchewan in 2009.

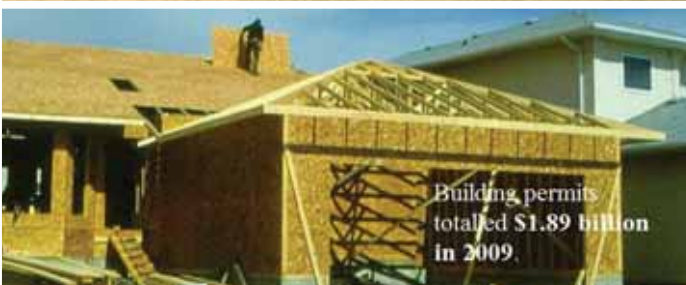


economy

The housing market in Saskatchewan is on fire. Housing prices rose to over 45% in the last twelve months as compared to 21.3% in Alberta 27% in BC and 5.9% in Ontario and Quebec. This growing economy is backed by the most abundant resources in the world.

- Saskatchewan has the richest oil reserves in Canada, especially oil sands
- 30% of the world’s uranium is produced in Saskatchewan
- Saskatchewan has the biggest potash mine in the world
- Saskatchewan has one of the biggest diamond reserves in the world
- Saskatchewan has advanced agricultural technology
- Saskatchewan accounts for about 70 per cent of Canada's flaxseed, representing 25 per cent of world production
- Saskatchewan accounts for 87 per cent of Canada's mustard production representing 25 per cent of world production
- Saskatchewan accounts for over 10 per cent of the world's total exported wheat
- Saskatchewan accounts for 32 per cent of the world's lentil exports
- Saskatchewan produces more than \$1 billion worth of beef annually

With commodity prices already high, and anticipated to go even higher, Saskatchewan is poised for substantial economic growth.



project overview

Skyview Country Estates is an exciting new residential community which has been designed for people who are keen to live in a park setting, but have the luxuries of city-like services and have the space for privacy, pets, outdoor hobbies, and the peace to enjoy Saskatchewan's natural beauty.

Each of the 126 lots in the Skyview Country Estates subdivision is approximately .75 acres in size and features panoramic views of the lake. The slope of the land readily lends itself to the construction of walk-out basements. All lots are serviced with power, natural gas, water, and sewer, allowing ease of city life in a lake-side setting.

Approximately 300 - 400 feet of Crown owned land lie between the development and the lake. This protected area provides the ideal environment for walking paths, picnic areas and nature habitats while preserving the lake's shoreline for the enjoyment of all.

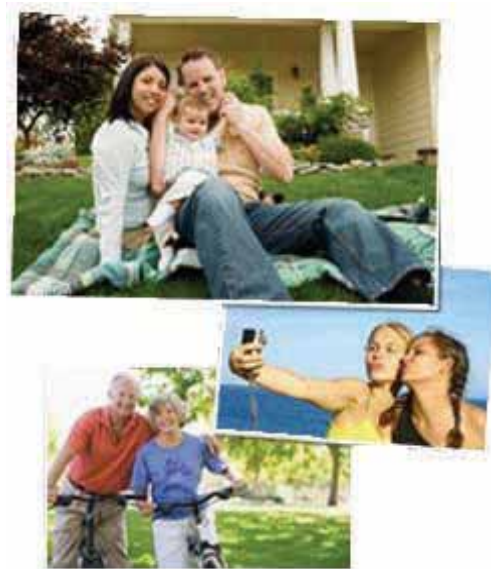
area features

City of Saskatoon - The largest city in Saskatchewan is just a 20 minute drive away. Saskatoon was recently rated the number one city in Canada for air and water quality by Chatelaine magazine and is home to year 'round festivals and cultural activities.

Blackstrap Provincial Park - Named after the mountain that rises 45 meters above the surrounding prairies, this park is a handy location for year 'round recreation.

Dakota Dunes Casino and Golf Course - Located just 10 miles away, this resort offers a full-service 18 hole golf course and a beautiful Vegas-style casino with over 80,000 sq. ft. of top-notch entertainment.

Highway 11 - The lots are directly adjacent to Hwy 11 which acts as the major double lane highway between Saskatoon and the capital city of Regina.



lot design

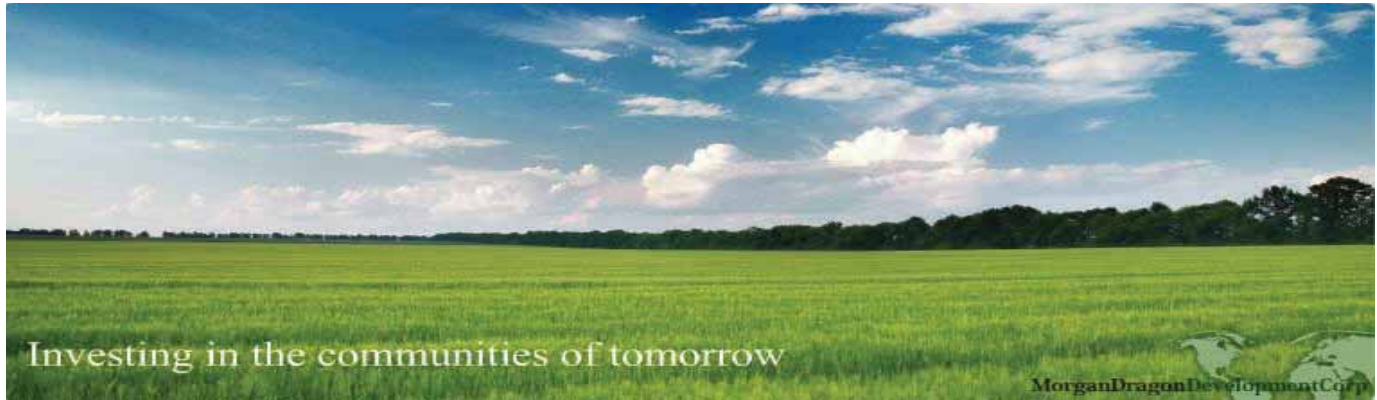
- 1 ¾ miles of lake front
- Many lots have 20 meter lift from lake level
- Contains 126; .75 acre lots (79 lake front lots, 47 back lots)
- All lots have panoramic, easterly view of lake
- 100 meter buffer strip between lots and lake, will be converted into park, and walking paths
- Zoned residential recreation, all permits in place
- Could be zoned for condo's, multi unit complex
- 4 acre parcel set aside for commercial services
- Could become resort and control municipal taxes
- Each lot is serviced with roads, power, natural gas, a low pressure pipeline, and a community sewage system
- Architectural guidelines and restricted lot usage in place to ensure the continued integrity of the development

lot location

- 20 minutes south of the city of Saskatoon
- Directly adjacent to Highway 11 which interconnects the cities of Saskatoon and Regina
- On south-western side of Blackstrap Lake
- Approximately 10 miles from Dakota Dunes Casino and Golf Course
- Directly across lake from the 1500 acre Blackstrap Provincial Park
- 5 minutes to the town of Dundurn
- Directly across lake from Cedar Lodge, a multi-purpose hotel and convention center







about us

MD Development is a 100% Canadian owned land development company, with a very specific and strategic philosophy. Our position is to continue focusing our energy within the same general area of our most-recently successful projects. Our development properties are just south of Saskatoon, along the major N/S highway 11, which is the main corridor between the booming cities of Saskatoon and Regina. The reason for this is simply because of the areas suitability for cost-effective development, and to therefore ensure that our partnership receives an excellent, (well above-average) return on investment. It is important to note that this is a very family-friendly location and is actually just minutes away from Blackstrap Provincial Park, the new Dakota Dunes 18-hole Golf Resort and The Whitecap Casino/Entertainment complex. It's interesting to note that the cities of Regina and Saskatoon, with their own set of diverse economic drivers and growth patterns are becoming closer in many aspects - as the economic growth of Saskatchewan continues to spike.

As recently as Feb 8, 2010, Canada Mortgage and Housing reported that residential housing starts in Saskatoon were up by a staggering 388 % in Jan 2010, compared to just one year ago and residential construction in the province recorded a 275 % increase in the same time period.

Our strategically-researched large scale land investment opportunities are available to qualified Canadian investors. We offer our clients an exceptionally well- trained and dedicated team of professionals. Our goal is to forge successful, long-term relationships with our valued business partners. We are very proud of our reputation for having the most responsive and caring "old fashioned" style of customer service in the entire industry.





MONEY

A subsidiary of TVR | QUEBECOR MEDIA

My portfolio ▶ Start a new session | Register | Vistez Argent ▶

[Home](#) [News](#) [Stocks](#) [Business](#) [My money](#) [Videos](#) [Mobile](#) [RRSP](#)

Wednesday, March 16, 2011

Sask., NFL to top growth among provinces

February 18, 2011 | 12:33

Money

Search

Quotes, Funds, News and Companies

Search

News

Comments

Send | Print | Size A A A

Share:      

Saskatchewan and Newfoundland and Labrador will be the fastest growing provincial economies in 2011, helped by booming commodity prices, according to a report by the Conference Board of Canada.

Saskatchewan's real gross domestic product will rise by 3.9% in 2011 and 4.5% in 2012. It is the fastest growth of all the provinces. The booming potash industry and increasing energy revenues will bolster the economy, according to the Provincial Outlook Winter 2011.

Newfoundland and Labrador will expand by 3.6%, helped in particular by nickel and iron ore mining. Unemployment in the province will fall from 14% in 2010 to 11% in 2012, a 40-year low.

Elsewhere across the country, government efforts to reduce debt levels will restrain government spending and drag on growth. Only four provinces will post surpluses this year, including Saskatchewan, Newfoundland and Labrador, Alberta and Nova Scotia, it said.

Federal and provincial governments poured funds into infrastructure and other projects under the \$60.2 billion Canada Economic Action plan to stimulate the economy after the 2008 financial crisis.

"As governments start to rein in deficits, public investment and spending growth will contribute little to provincial economic growth over the next few years," said Marie-Christine Bernard, associate director of the provincial outlook.

Alberta will manage to balance its budget this year because it will use its accumulated reserves to avoid a deficit. The economy there will rise by 2.4% as growth in the energy sector supports other areas of the economy such as construction, manufacturing and transportation.

The province will have recouped all of the jobs lost during the recession by the end of the year.

Ontario's economy will expand by 2.1%, helped by auto exports and rising business confidence. Construction spending is likely to drag, the Conference Board said.


GDP growth is likely to be half of last year's rate in British Columbia, which got a boost from the 2010 Winter Olympics in February. Weakness in the U.S. housing market will restrain demand for forest products, while construction and government infrastructure spending will decline.

Growth in Quebec is likely to be about 1.8% as higher taxes cut into household spending power, it said.

Quick Search:

 This Site All Government Sites[Advanced Search](#) | [Help?](#)

Wednesday, March 16, 2011

[Directory](#) | [Contact Us](#)

SERVICES FOR:

[Residents](#) >>[Visitors](#) >>[Business](#) >>[Home](#) / [About Government](#) / [News Releases](#) / [May 2010](#) / SASKATCHEWAN'S NEW HOUSING CONSTRUCTION HOTTEST IN CANADA

RESOURCES

[About Saskatchewan](#) >>[About Government](#) >>

- » [Lieutenant Governor](#)
- » [The Premier](#)
- » [Cabinet](#)
- » [MLAs](#)
- » [Legislative Assembly](#)
- » [Ministries & Agencies](#)
- » [Programs & Services](#)
- » [Publications](#)
- » [Forms](#)
- » [Legislation](#)
- » [News Releases](#)
- » [Other Governments](#)

NEWS RELEASE - MAY 10, 2010

SASKATCHEWAN'S NEW HOUSING CONSTRUCTION HOTTEST IN CANADA

Saskatchewan's housing market is beginning to heat up with urban starts up 204 per cent in April 2010 over last April, the highest increase in Canada.

According to a report released by CMHC today, single family dwellings were up by 182 per cent and multiple units increased by 463 per cent.


"The urban housing market has had a remarkable turnaround from last year in both single and multiple units," Enterprise Minister Ken Cheveldayoff said. "The market change is due to a renewed consumer confidence and an economy that is on the move."

Urban housing starts are up by 184 per cent in the first four months of 2010 compared with the same period in 2009. Saskatchewan had the highest increase among the provinces - well ahead of the 58 per cent increase on the national front.

During this same period, single family dwellings increased by 134 per cent and multiple units were up by 526 per cent.

For more information, contact:

Deb Young
Enterprise Saskatchewan
Regina
Phone: 306-798-0503
Email: Deb.Young@enterprisesask.ca

 [Print this page](#) [Email to a friend](#)**Find out** >

what makes Saskatchewan a
great place to live, work and invest.

saskjobs.ca
real careers. real life.

Quick Search:

 This Site All Government Sites[Advanced Search](#) | [Help?](#)

Tuesday, March 15, 2011

[Directory](#) | [Contact Us](#)

Moving Saskatchewan Forward

Sharing our infrastructure success stories

SERVICES FOR:

[Residents](#) >>[Municipal Administrators](#) >>[Home](#) / [About Municipal Affairs](#) / [Funding](#) / [Moving Saskatchewan Forward](#) / [Dundurn - Area Water and Wastewater Projects](#)

RESOURCES

[About Saskatchewan](#) >>[About Government](#) >>[About Municipal Affairs](#) >>

- » [Ministry Overview](#)
- » [Programs & Services](#)
- » [Growth & Development](#)
- » [Funding](#)
- » [Municipal Administration](#)
- » [Health & Safety](#)
- » [Legislation](#)

MOVING SASKATCHEWAN FORWARD

Dundurn - Area Water and Wastewater Projects

Cooperation key to success of Dundurn-area water and wastewater projects

Two massive, water-related infrastructure projects in the Dundurn area are testaments to the value of municipalities working together.

The projects are worth a combined \$30 million dollars; one is going to provide potable water and the other involves the construction of a massive wastewater disposal system.

The Dundurn Rural Water Utility potable water project will provide drinking water to the towns of Dundurn and Hanley, the rural municipalities of Rosedale and Dundurn, and the southern parts of the RM of Corman Park, as well as Blackstrap Provincial Park. In total, the system will serve more than 1,800 households.

Construction on the huge, \$23-million project began in 2010 and involves putting more than 285 kilometres of pipe into the ground. The drinking water will come from the Saskatoon SaskWater source at the Clarence pumphouse and will travel in a new underground pipeline along Highway 11.

Water will flow to some residents starting in 2011, and the project is expected to be completed by 2012.

The new system is a huge undertaking, but project manager Luke Muirhead says the inter-municipal collaboration is preferable to each municipality trying to go it alone with individual treatment facilities.

"They're very expensive, very tough to operate," Muirhead said, adding that municipalities that don't partner with their regional neighbours often "don't have the operating money to keep them going in the future, much less create a reserve to re-build the thing in 50 years."

Muirhead notes that the potable water system is going to be a big boon for the town of Hanley.

"They were pulling 80 per cent [of their water] from an open-bodied reservoir... they were also pulling 20 per cent from well water," he said. "So the organics you'd have coming in from surface water and the hardness you'd be trying to treat from well water, it takes a very skilled operator to try to handle problems like that, if you even could."

Continued on next page >>

Beside the improvements in water quality, the new potable water system will be available to new subscribers at a relatively reasonable price. Most subscribers will be paying \$7,500 or \$9,500 to be connected to the system. Elsewhere, Muirhead notes, the same service could cost more than \$18,000.

The Dundurn area has experienced some of the most rapid rural residential growth of anywhere in Canada. For example, the Rural Municipality of Dundurn has 790 new lots currently under development.

The population boom in the region has resulted in a greater demand for sustainable wastewater disposal.

The Town of Dundurn's wastewater was being treated in a lagoon, which was operating at capacity and was going to require expansion. The resort villages of Thode and Shields needed a new lagoon because they were collecting their wastewater into holding tanks and then trucking it 30 kilometres to Hanley.

In 2008, representatives from a number of the communities in the region formed the Dundurn and Area Wastewater Utility board and commissioned Associated Engineering to come up with a regional solution to their wastewater collection, treatment and disposal needs.

"We've had good cooperation with all four communities," said RM of Dundurn reeve Fred Wilson, who also serves as chair of the Dundurn and Area Wastewater Utility board. "We all had a common purpose, so it worked out quite well, actually."

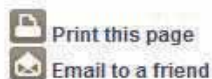
The answer will be a new regional wastewater collection system that consists of a new, larger aeration lagoon, which will collect wastewater from five different pumping stations in the communities. Once treated, the water will flow through a nearby marsh, into a creek and travel more than 20 kilometres before flowing into the South Saskatchewan River.

The new system, which will cost about \$9.1 million, is expected to be completed in the fall of 2010. It will serve the Dundurn (both the town and the RM), Thode, Shields, several private developments along Lake Blackstrap, and the Hillcrest Hutterite colony.

Both the potable water project and the wastewater projects received major funding from the federal and provincial governments via the Building Canada Fund - Communities Component (BCF-CC). The BCF-CC provides infrastructure funding for projects in communities with populations under 100,000.

The federal and provincial governments each committed \$7 million to the potable water project and \$3 million to the wastewater project. That adds up to \$20 million in federal and provincial funding.

"If we hadn't have had that funding, it would have been pretty tough to make it go," Wilson said. "The Building Canada Fund grant was very crucial to the success of the project."



- Key potash players
- Potash in pictures
- A Potash explainer
- Potash video debate
- Video: Clement rejects takeover

The velvet takeover

NATHAN VANDERKLIPPE

Saskatoon— From Saturday's Globe and Mail
 Published Friday, Aug. 20, 2010 7:32PM EDT
 Last updated Friday, Oct. 29, 2010 1:55PM EDT

At a potash mine not far from this Prairie town, a worker emerges from a cavernous storage facility, carrying a handful of potash into the light. The sun catches the chunks of salt-like material and, for a brief moment, makes them sparkle like diamonds.

It is, for an instant, a vision of a future many in Saskatchewan are convinced is theirs to seize, where a great underground deposit of this often-ignored substance is transformed into a glittering source of wealth.

Potash Corp. of Saskatchewan
 (POT-N)
54.34 ▲ 118 2.22%
 As of Mar 15, 2011 3:12



Range: 1 Day 5 Day 1 Year
[View Larger Chart](#)
[Add to Watchlist](#)



INTERACTIVE
 Foreign takeovers of Canadian companies

BHP Billiton
 (BHP-N 86.96 -2.06 -2.31%) \$38.6-billion (U.S.) bid for Saskatchewan's largest potash producer, Potash Corp. (POT-T 53.40 1.66 3.21%) has alerted the world to what many here have long known: That the sweeping Prairie wheat fields are mere window dressing for what lies beneath. Saskatchewan is what Steve Halabura, a prominent Saskatoon geologist and entrepreneur, calls the motherlode, the Saudi Arabia of potash. The mineral, used to enrich crop production in farms around the world, is found here in more abundance than anywhere else on earth. Its thin underground layers, deposited here by an ancient sea, lie in a band that sweeps southern Saskatchewan from the Alberta to the Manitoba border and south to Montana.

Potash Corp., created and long owned by the Saskatchewan government, was born in a province whose tradition of government control has spawned

a network of Crown corporations that figure prominently in major industries, such as telecom, natural gas and insurance, areas left in private hands in most other provinces. Foreign ownership has often been met with hostility.

But the BHP bid is being met with little resistance in Saskatchewan. In recent years, the province has been transformed by a global wave of demand for its resource treasures – oil, wheat, uranium and other minerals – that have created wealth never before enjoyed by a population previously accustomed to government-style enterprise. So rather than fear a new owner for the province's corporate trophy, many welcome the BHP bid and are hopeful that if BHP makes good on a promise to base its potash operations in Saskatoon, the city will prosper from the growing global profile of the company.

"I, for one, take the view that what the hell is the difference" if BHP succeeds in its bid, says Don Ching, a long-time provincial business leader and civil servant who served on the Potash executive board when it was first made a Crown corporation in the 1970s.

That feeling comes in part from a broad disenfranchisement with Potash Corp. While its spectacular rise to dominant status in the fertilizer industry has elicited pride, Potash's steps away from its roots – into assets around the globe and office space near Chicago, where chief executive officer Bill Doyle currently lives – have also uprooted it from its home. Some still remember the days when, shortly after the government took over the company, it lowered a bus a kilometre into the earth and took school kids and Lion's Club members from all over the province on tours, to show them an asset they owned.

Though the tours still take place, much of the connection has vanished, and Potash, with its shareholders spread around the globe, already feels like a foreign company. Having it sold, many feel, will change little but the colour of its logo, perhaps substituting Australian red for Saskatchewan green.

That great trove of potash, after all, isn't going anywhere. Potash is only found in a dozen countries, there's no known fertilizer substitute and Saskatchewan has so much of it that people debate whether it's a thousand-year supply or merely a few hundred. So unlike those places that have arguably suffered from foreign takeovers – think a year-long strike in Sudbury's foreign-owned nickel mines or job losses in the steel sector in Hamilton – this province believes the industry's growth is a given, and layoffs and shrinkage a nearly non-existent possibility.

That view is driven both by promises by BHP – the president of its diamonds and specialty potash division, Graham Kerr, said Friday that "we see it very much as building a really, truly Canadian business" – and knowledge that a growing world will need more potash. The United Nations has predicted a doubling in food demand by 2050, and as China and India embrace an appetite for meats, which require far more grains to grow, demand for fertilizer is expected to soar.

That doesn't take away from the fact that Potash Corp. has for decades been a source of provincial pride. The government of Saskatchewan formed the company, and the possibility of it becoming the property of a foreign company, be it Australian, Chinese or Russian, is cause for worry.

"It's sort of like the Saskatchewan Roughriders. The people own them," said Ross Fraser, who manages Supreme Steel's Saskatoon operation. "I know the people don't own Potash Corp., but you get a bit of that feeling."

Some business leaders are also nervous that a global company will use its network of international suppliers to supplant local manufacturers. Could BHP buy its equipment overseas, rather than from Prairie Mine & Parts, a local company that has grown up serving the potash industry?

"I never looked at any kind of takeover as being a bad thing," said owner Murray Popplewell, who owes at least part of his fleet of Arabian horses to his potash success. "But there's pros and cons to it. They could start buying some mining machines from over in Europe, and then it wouldn't be good for us."

Yet Saskatchewan is a province thoroughly dependent on exports – it uses very little of its own wheat, uranium or even potash – and few here support erecting barriers trade. Besides, many recall that Saskatchewan has done well by foreign ownership in the past. The industry was, after all, founded by foreign companies. Americans, French and Germans built most of the first mines. An international buyer, then, feels like a return to the beginning.....

Continued on next page >>

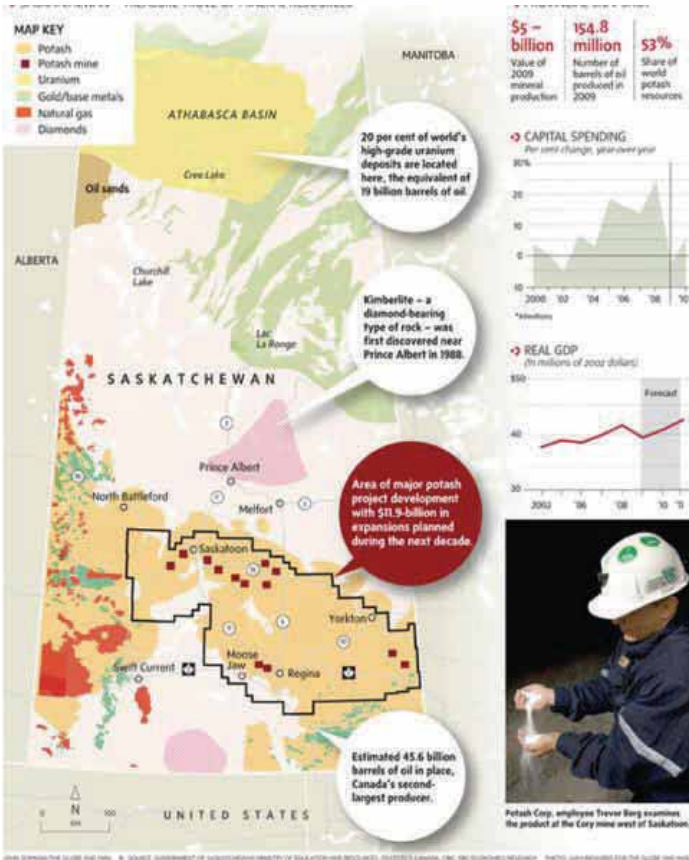
Key potash players

Potash in pictures

A Potash explainer

Potash video debate

Video: Clement rejects takeover



are now staying – and returning from elsewhere. The George Gordon First Nation, whose traditional territory overlays four operating potash mines, wants to own or build its own mine. Manufacturing companies have staked almost their entire existence on the commodity. Young professionals are buying houses and cars, while older workers are cashing out potash stocks to fund their retirements.

The entire mindset of the province is shifting as a province rich in resources – potash is joined by oil and gas, uranium, diamonds, gold and a host of other minerals – embraces a future it has long felt it deserved.

No longer is Saskatchewan what Herb Pinder Jr., a former Olympic hockey player and prominent businessman, describes as a place perennially focused on the future, on the hope that "the Riders will be better next year, the crop will be better next year."

It's become today country, a place suffused with a confidence that has leapt with house prices – many of which have doubled and tripled. As recently as the 1980s, people saved more than 20 per cent of their disposable incomes. In recent years, rising optimism about earning prospects has replaced nervousness about crop failure, and people have raided savings. Since 1997, the amount of personal accumulated savings has tumbled 26 per cent.

The changes go "right down to the bedrock values of the province," said Eric Howe, a professor of economics at the University of Saskatchewan who often advises the provincial government. No longer what Mr. Howe calls a collection of "peasant farmers" that had to band together to succeed, this is a place where wealth is spurring a rejection of the socialism that once glued it all together. "It's making profound changes," Mr. Howe said.



Refer to <http://www.theglobeandmail.com/globe-investor/potash/the-velvet-takeover/article1680690/> for full article.....

An injection of riches

Ever since its accidental discovery in the early 1940s by companies exploring for oil, potash has held a tantalizing allure for this province. It promised freedom from the caprices of weather and crops. It promised to lift a moribund provincial economy.

And for decades, it failed to deliver. Overproduction forced government quota systems and, eventually, the government acquisition of several mines to form the Potash Corporation of Saskatchewan in 1975, an entity whose creation consolidated the industry and prepared the ground for the subsequent spinoff of a company that is now the dominant player in world fertilizer.

Now, despite a lull that has punished profits in the past two years, potash is helping to catapult workers, investors and business owners to a kind of prosperity historically seen only to the west, in oil-rich Alberta.

In 2008, for the first time, potash exports beat out agricultural exports as a share of the provincial economy. Potash exports in that year, when prices leaped and Potash Corp. briefly became the biggest public company in the country, formed nearly 20 per cent of the value of Saskatchewan's exported goods.

Oil and gas remains No. 1 – but it is potash profits that have nourished a broad array of service industries, many of which have used skills developed in Saskatchewan to venture farther afield into other commodities and other countries. The prospects for potash are so good that everyone wants in. University graduates, long destined to leave,



COLLIERS INTERNATIONAL | SASKATOON

The Knowledge Report

INDUSTRIAL | THIRD QUARTER | 2010

MARKET INDICATORS

	2010 Q1	2010 Q3
VACANCY RATE	↓	↓
NET ABSORPTION	↑	↑
CONSTRUCTION	↔	↑
LEASE RATES	↔	↔

HIGHLIGHTS

- 19.5 million square feet of industrial space in Saskatoon
- 2.5% vacancy — among lowest in Canada
- Lease rates stable
- \$8.50-\$10.00 net/SF - existing inventory
- \$11.00-\$13.00 net/SF - new construction

CONTACT INFO

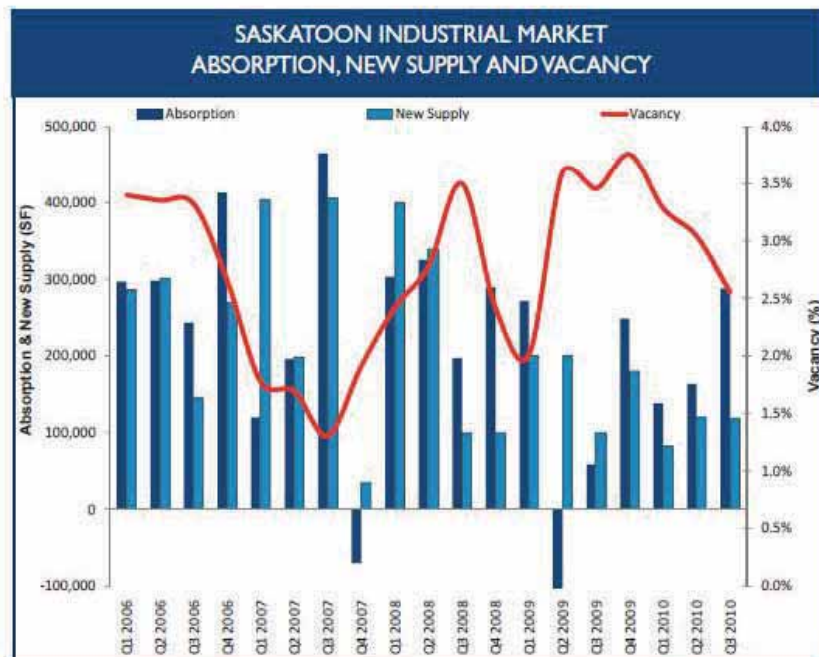
**COLLIERS McCLOCKLIN
REAL ESTATE CORP.**
728 Spadina Crescent East
Saskatoon Saskatchewan S7K 4H7
Canada
Tel: 306.664.4433
Fax: 306.664.1068

Research Associate
Duncan Mayer

Marketing Manager
Chris Ransom

Saskatoon Industrial Market Experiences Continued Growth

Saskatoon has remained insulated from the economic slowdown seen in other Canadian cities. As predicted in Q1, industrial space remains limited despite considerable industrial construction. The strength of the Saskatoon industrial market is fueled by strong lease activity and a number of owner-user developments in Marquis Industrial. As of Q3, more than 450,000 square feet of industrial space has been absorbed by the market.



Although a number of speculative construction projects sat vacant through 2009, much of the inventory has been absorbed by current market demand. Vacancy has decreased more than 1% since December 2009 and is presently at 2.5%. Due to low interest rates and relatively high industrial lease rates the majority of early 2010 construction has been characterized by owner-users. In recent months there has been a resurgence of speculative construction as developers recognize available industrial inventory is not meeting present demand. ▶



**COLLIERS
McCLOCKLIN**

OVERALL MARKET

The overall industrial market remains healthy across the country. All major markets are experiencing stable or declining vacancy rates. Saskatoon and Regina lead Canada at 2.5% and 2.0% respectively, Winnipeg follows at 3.77% and Edmonton at 4.6%.

LAND

In Q1 the City of Saskatoon Land Branch (the City) had 24 industrial lots available in Marquis Industrial Phase 3B with prices ranging between \$295,000-\$335,000 per acre. By May of 2010, all of Marquis Phase 3B had been sold, leased or optioned. In July 2010, the City released 10 lots, totaling 38 acres, to tender ranging in price between \$385,000-\$480,000 per acre. Despite an average price increase of over 20%, the City has sold four and optioned three of the 10 lots.

Additional industrial land was scheduled to be released for October 2010, but due to weather conditions during peak construction months, the servicing of new industrial land fell behind schedule. Marquis Phase 4 will be released in November 2010 with 19 lots ranging between \$300,000-\$360,000 per acre depending on size and location. Portions of Phase 5 may be released in early 2011.

RENTAL RATES

Industrial rental rates remain unchanged from Q1 as rates continue to range between \$11.00-\$13.00 net per square foot for new construction and \$8.50-\$10.00 net per square foot for existing facilities. Industrial rental rates in both Saskatoon and Regina continue to lead Canada.

FORECAST

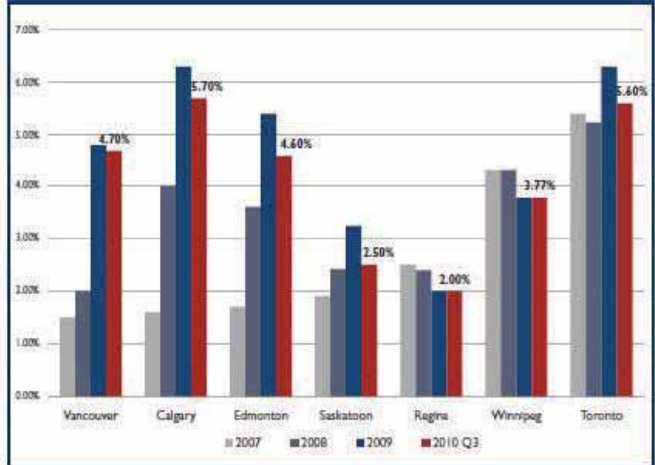
Historically low interest rates through 2010 have prompted investors to explore investment opportunities in Saskatoon's industrial market. Much of the serviced industrial land sold in recent months is now available for resale or as build-to-suit opportunities. Marquis Phase 4 will provide much needed inventory but will likely sell at a slower rate than what has been observed through 2010.

Into 2011 Colliers McClocklin expects industrial vacancy to increase briefly with the completion of several speculative construction projects, but vacancy will persist at historically low levels. ■

SASKATOON CONSTRUCTION ACTIVITY

ADDRESS	USER	SIZE	STATUS
3530 Millar Ave.	For Lease	97,000 SF	Underway
3719 Millar Ave.	For Lease	72,000 SF	Underway
3720 Kochar Ave.	SARCAN	60,000 SF	Underway
4015 Wanuskewin Rd.	Russel Metals	54,000 SF	Complete
510 - 46 th St.	Transit Bus Storage	50,000 SF	Complete
3610 Kochar Ave.	National Energy	30,000 SF	Complete
3911 Millar Ave.	Westco	26,400 SF	Complete
218 Faithfull Cres.	For Lease	26,000 SF	Underway
805 - 47 th St E.	Loraas Facility	25,000 SF	Complete
3711 Mitchelmore Ave.	For Lease	18,150 SF	Underway
3603 Kochar Ave.	Industrial Condo	18,000 SF	Underway
3703 Mitchelmore Ave.	For Lease	16,104 SF	Underway
3215 Faithfull Ave.	OK Tire	15,000 SF	Complete

CANADIAN VACANCY RATES



SALES ACTIVITY - Q1 AND Q3 2010

ADDRESS	SALE DATE	SALE PRICE	SIZE SF	SALE PRICE/SF	TYPE
1015 - 64 th Street E.	February 2010	\$ 25,500,000	163,000	\$156.44	Building
10 Molaro Place	June 2010	\$ 3,650,000	43,350	\$ 84.20	Building
406 Jessop Ave.	January 2010	\$ 2,400,000	22,440	\$106.95	Building
Parcel G -71 st Street E.	August 2010	\$ 1,775,000	217,800	\$ 8.15	Land
3914 Thatcher Ave.	June 2010	\$ 1,750,000	10,800	\$162.04	Building
1500 Quebec Ave.	May 2010	\$ 1,600,000	37,926	\$ 42.19	Building
3017 Faithfull Ave.	September 2010	\$ 1,375,000	11,250	\$122.22	Building

This report and other research materials may be found on our website at www.colliers.com/saskatoon. Questions related to information herein should be directed to the Research Department at the number indicated. This document has been prepared by Colliers McClocklin Real Estate Corp., a member of Colliers International, for advertising and general information only. Colliers International makes no guarantees, representations or warranties of any kind, express or implied, regarding the information including, but not limited to, warranties of content, accuracy and reliability. Any interested party should undertake their own inquiries as to the accuracy of the information. Colliers International excludes unequivocally all inferred or implied terms, conditions and warranties arising out of this document and excludes all liability for loss and damages arising there from. Colliers International is a worldwide affiliation of independently owned and operated companies. This publication is the copyrighted property of Colliers International and its licensor(s). © 2009. All rights reserved.



skyviewcountrystates.com

mdlandpool.com



TORONTO
7077 Kennedy Road, #210, TD Building, Markham, ON L3R 0N8

TEL
905 415 7715

FAX
905 415 7725