

Greengate Estates Phase II Plan Of Proposed Subdivision

showing subdivision of all of

N.W. 1/4 Sec. 11- Twp. 34- Rge. 4- W3rdMer.

R.M. of Dundurn No. 314

SASKATCHEWAN

Scale : 1 : 3000

Note :

Portion to be surveyed is outlined by a heavy broken line and contains 64.46 Hectares more or less. Standard Road Allowances shown on this plan are 20.117m in width. Measurements are in metres and decimals thereof. Distances are approximate and may vary by 10 metres. Contour intervals are 0.25 metre. Elevations are not relative to Geodetic and contours were supplied by others. Contours are shown for planning purposes and represent the overall trends in the terrain. The contours are not intended for purposes such as detail site grading or detailed road design.

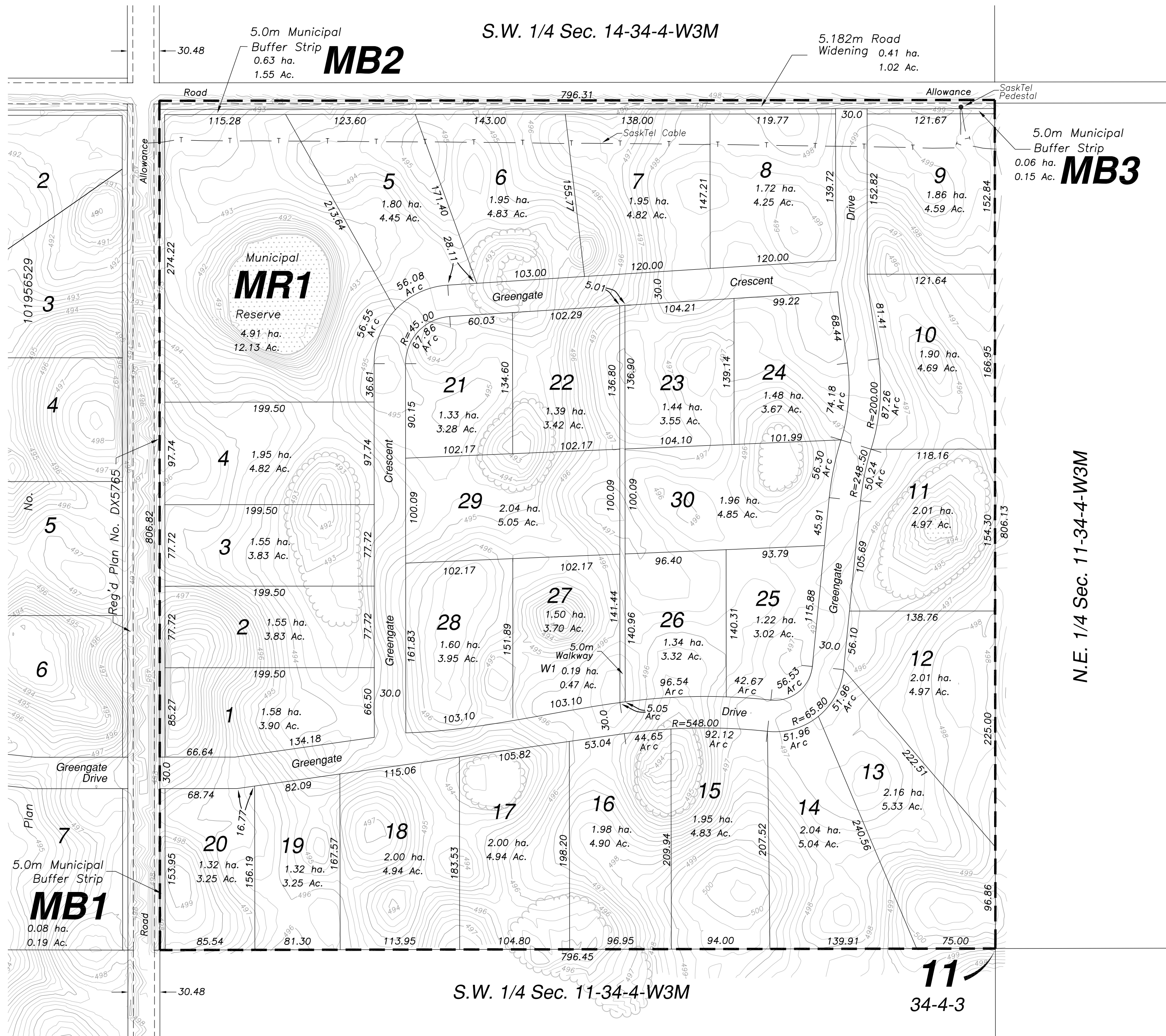
Sloughs shown as thus
Bush shown as thus

Title to the dedicated lands hereon is issue to:
R.M. of Dundurn No. 314
Box 159
Dundurn, SK S0K 1K0

Revision 1: Sept. 9/08 – To adjust to control survey.
Revision 2: Nov. 25/08 – To add SaskTel cable.
Revision 3: Sep. 27/10 – To add parcels 29 & 30.

Preliminary plan completed May 5th, A.D. 2008.

By : W. J. Amis
SASKATCHEWAN LAND SURVEYOR



N.E. 1/4 Sec. 11-34-4-W3M